

SLMTJ and K-Link *a decentralized and open-source* approach to knowledge management



Gianluca Colombo | OneOffTech | 14.05.2018

gianluca.colombo@oneofftech.xyz

+49 15141379076

<https://oneofftech.xyz>

K-Link: the vision

- Increase cooperation between and within institutions
- Enhancing data security & persistency
- Co-design the technology together with users
- Open Source: anyone can use and adapt the technology
- Anchor the technology in partner regions (users, service providers...)
- Reducing costs of data systems for end-users
- Promoting ownership

K-Link: the vision

- Increase cooperation between and within institutions
- Enhancing data security & persistency
- Co-design the technology together with users
- Open Source: anyone can use and adapt the technology
- Anchor the technology in partner regions (users, service providers...)
- Reducing costs of data systems for end-users
- Promoting ownership

K-Link: the vision

Organizational dimension

Technological dimension

Participatory dimension

Sustainability dimension

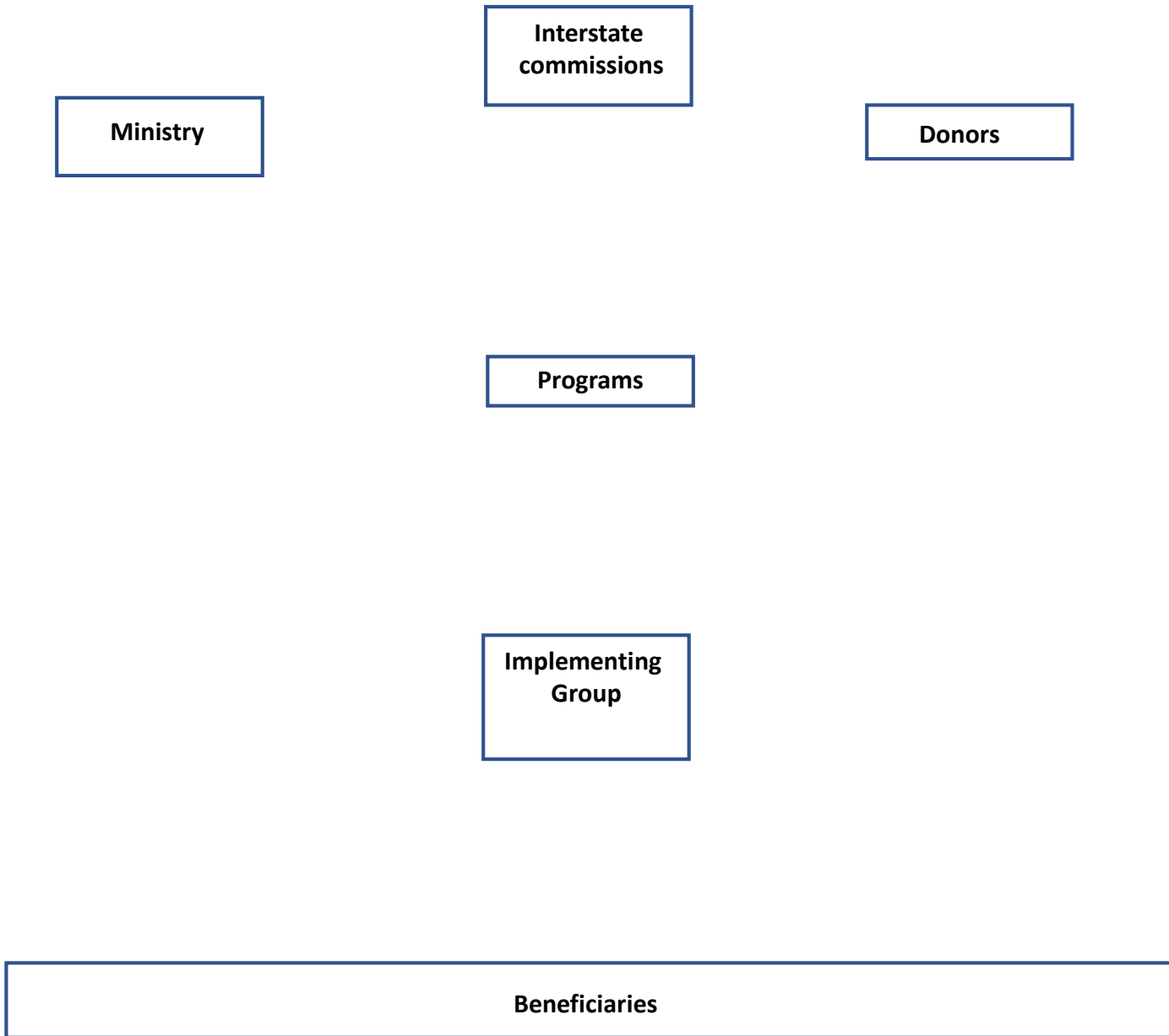
K-Link: the vision

Organizational dimension

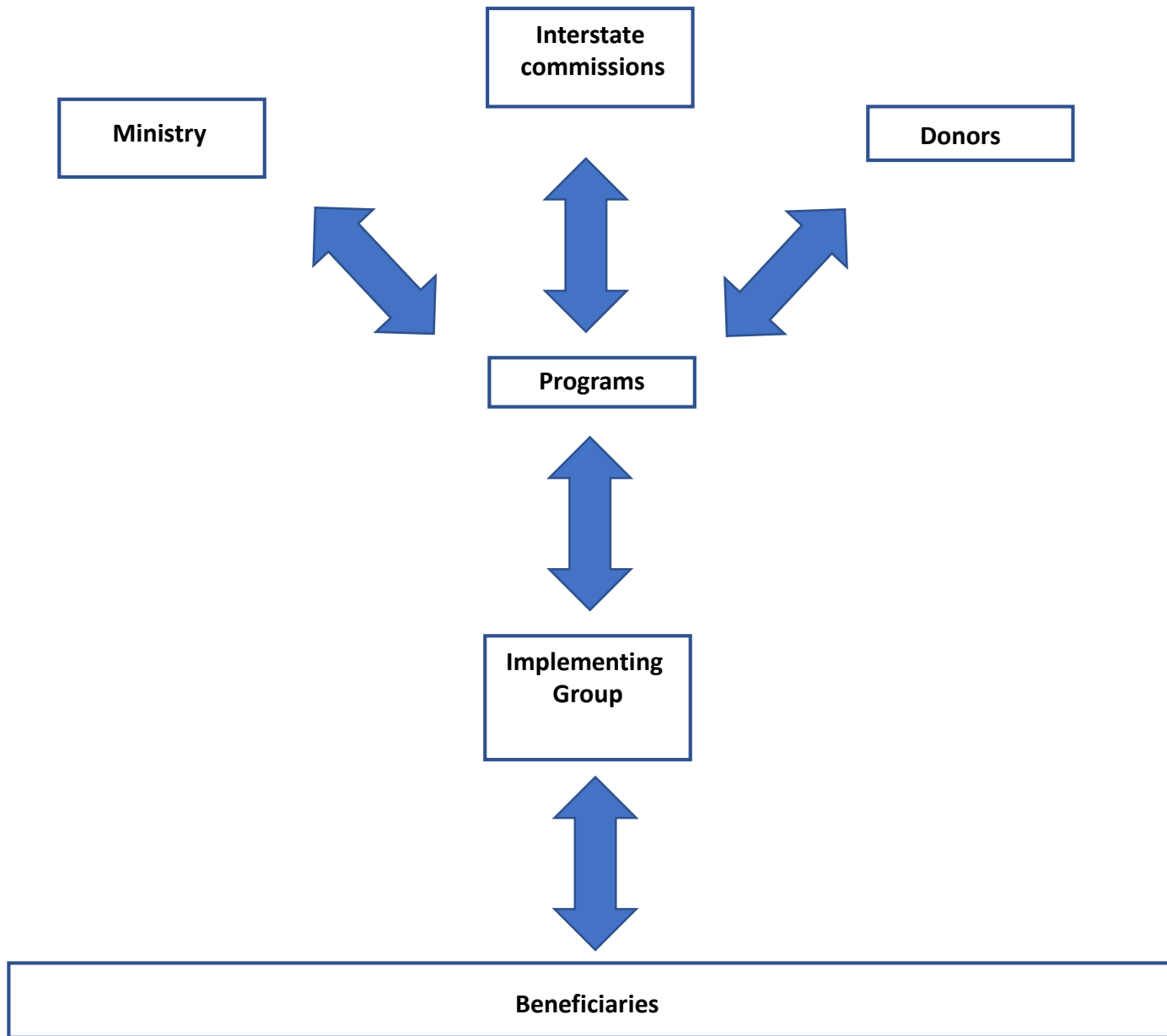
Technological dimension

Participatory dimension

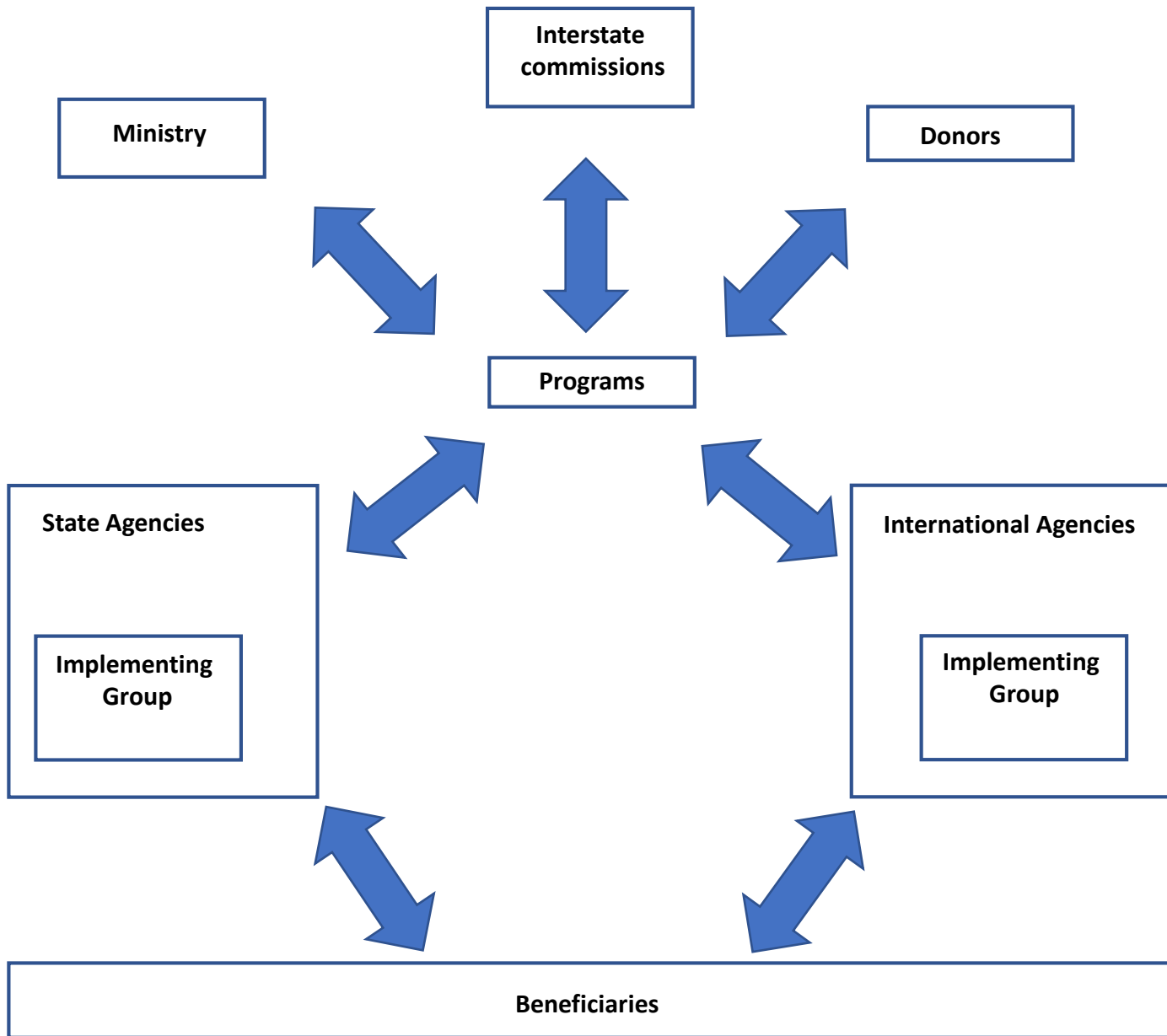
Sustainability dimension



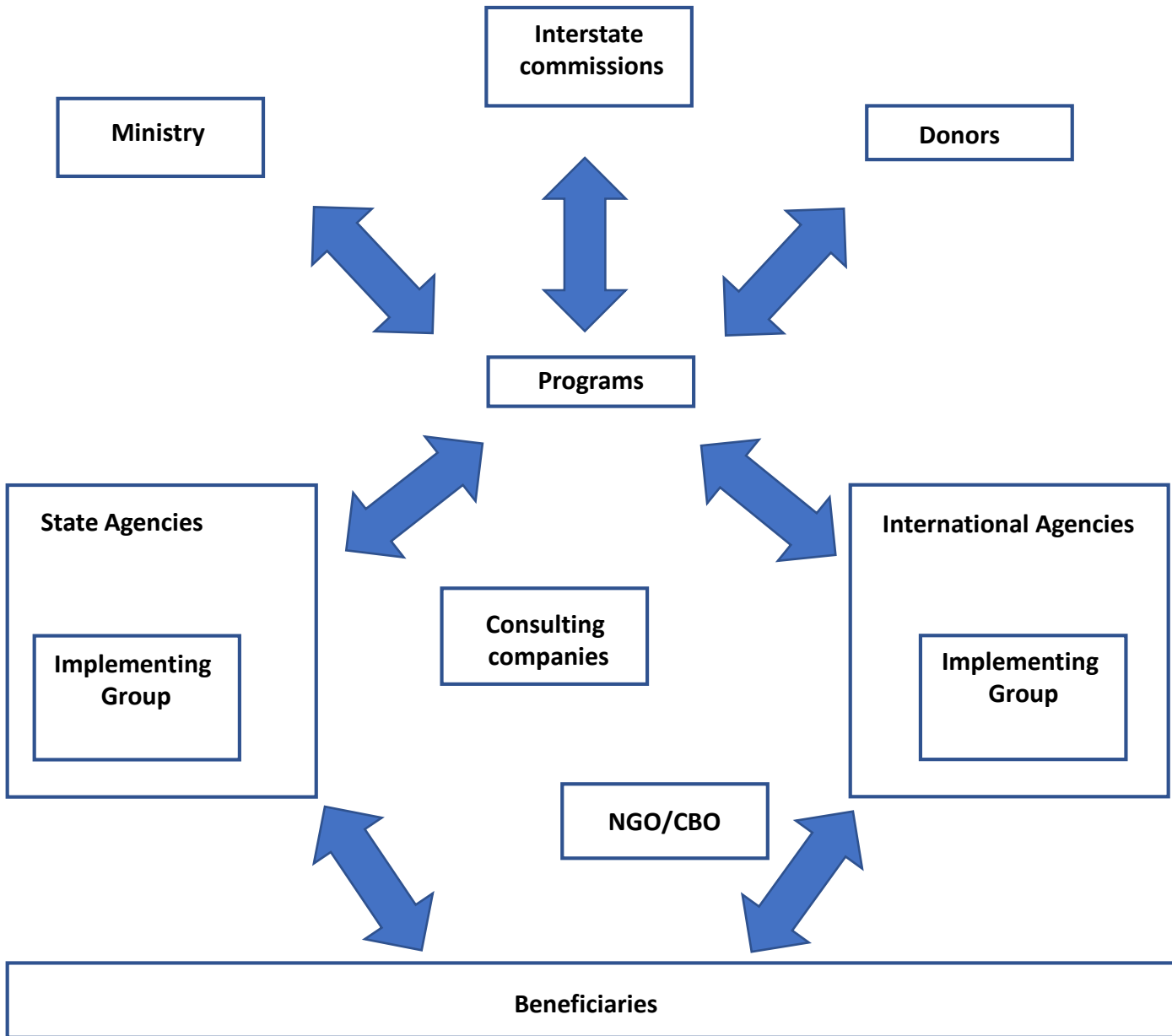
A simplified schema of stakeholders involved into projects implementation



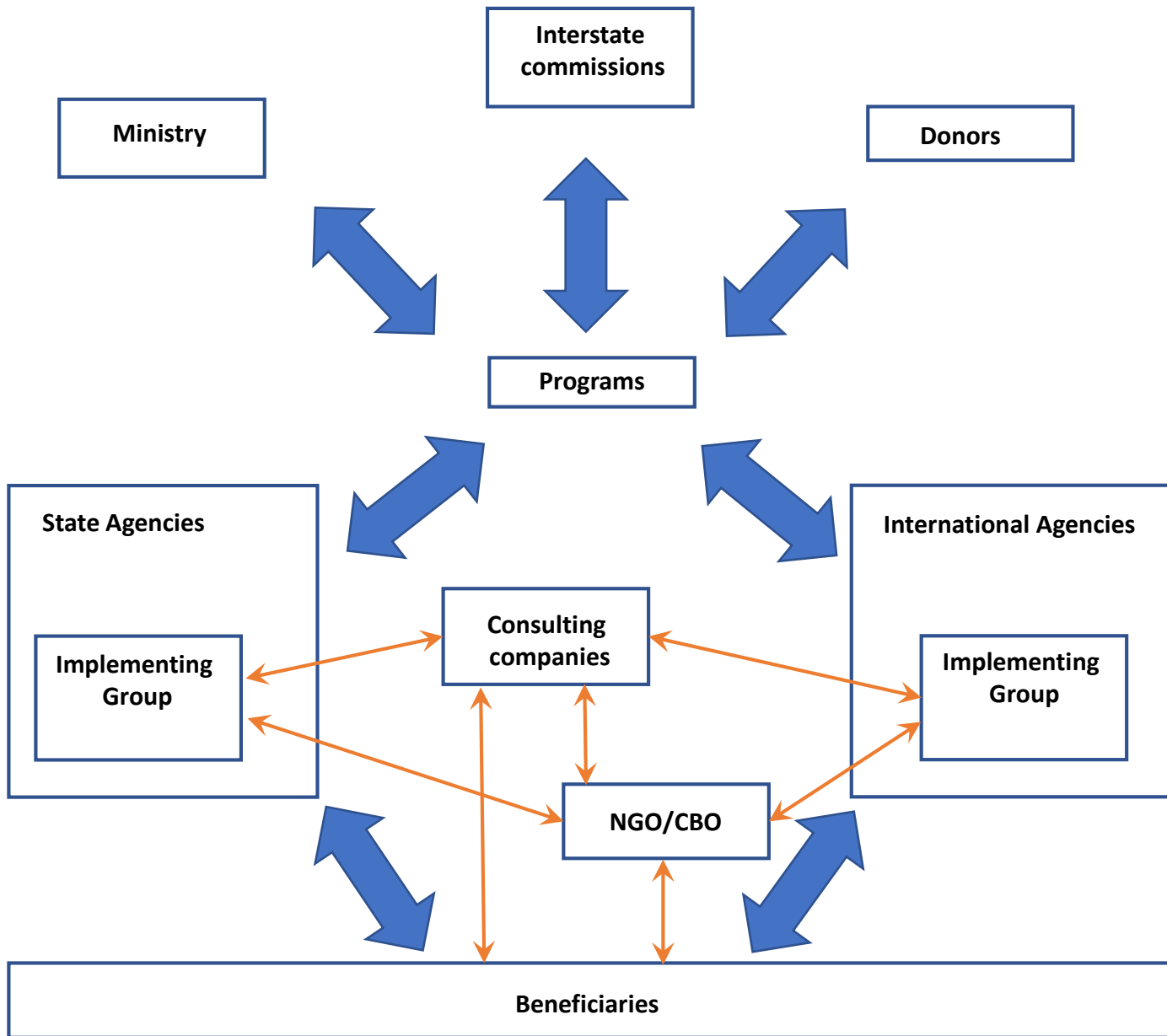
A simplified schema of stakeholders involved into projects implementation



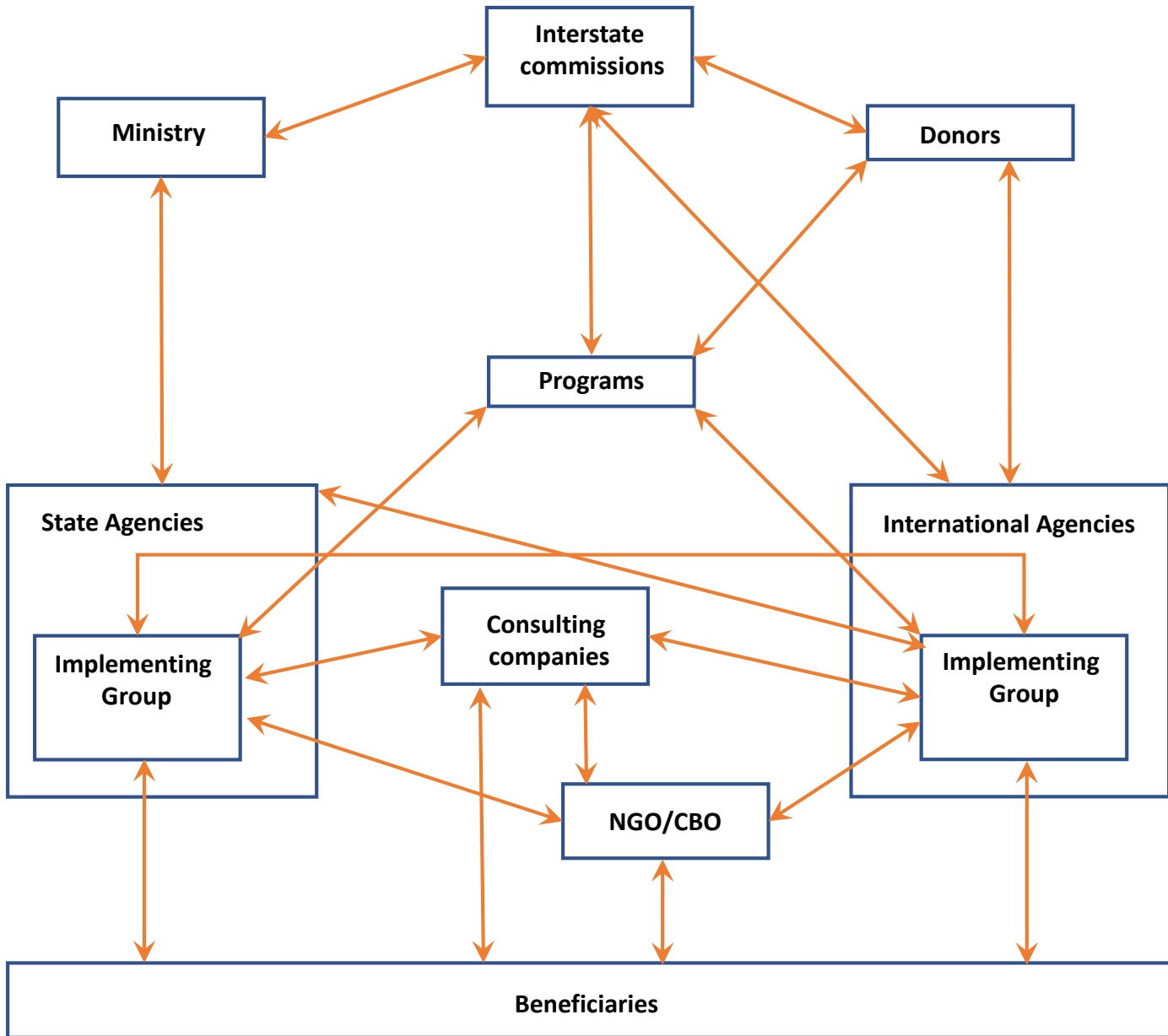
A simplified schema of stakeholders involved into projects implementation



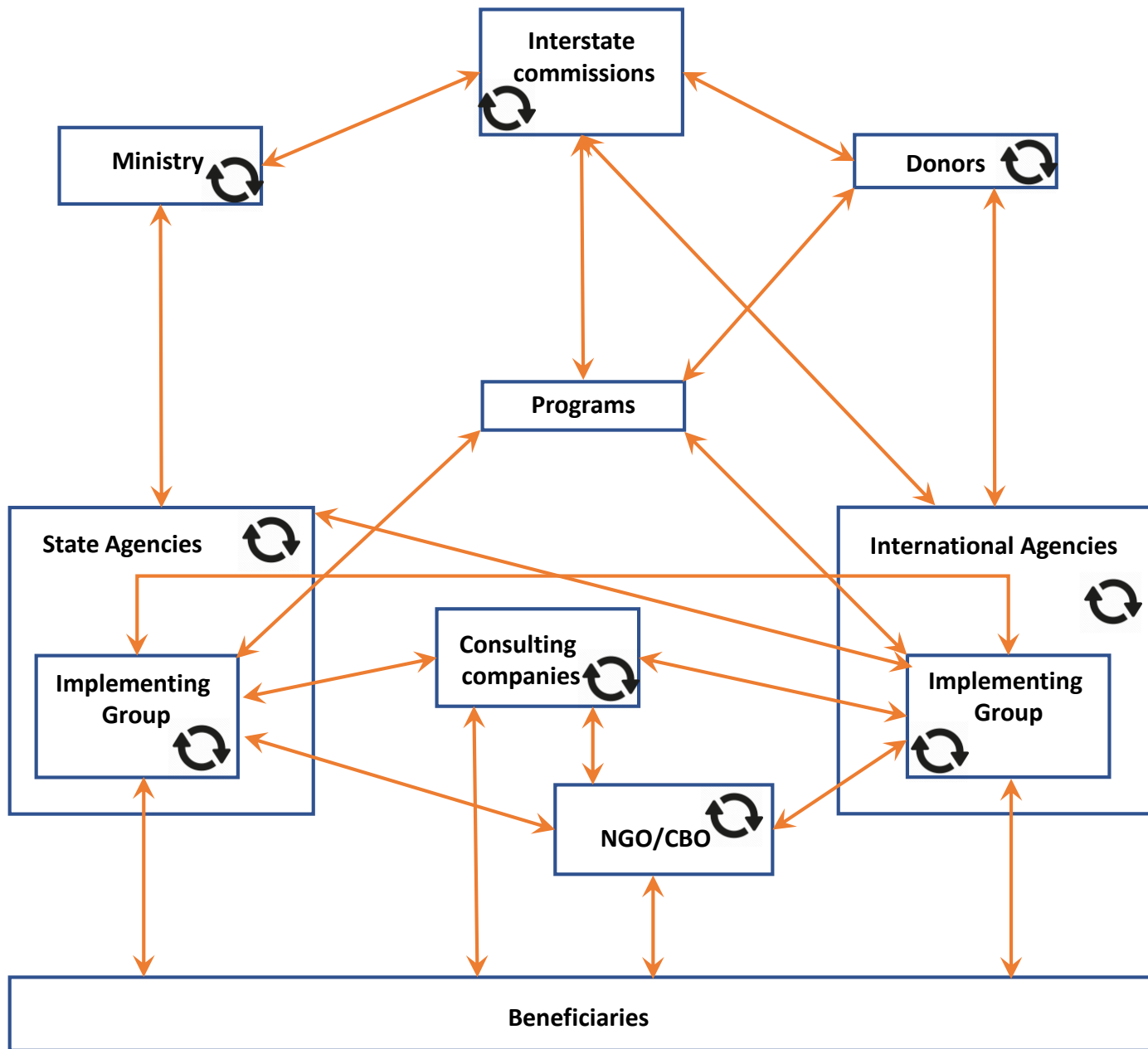
A simplified schema of stakeholders involved into projects implementation



....Processes get complicated

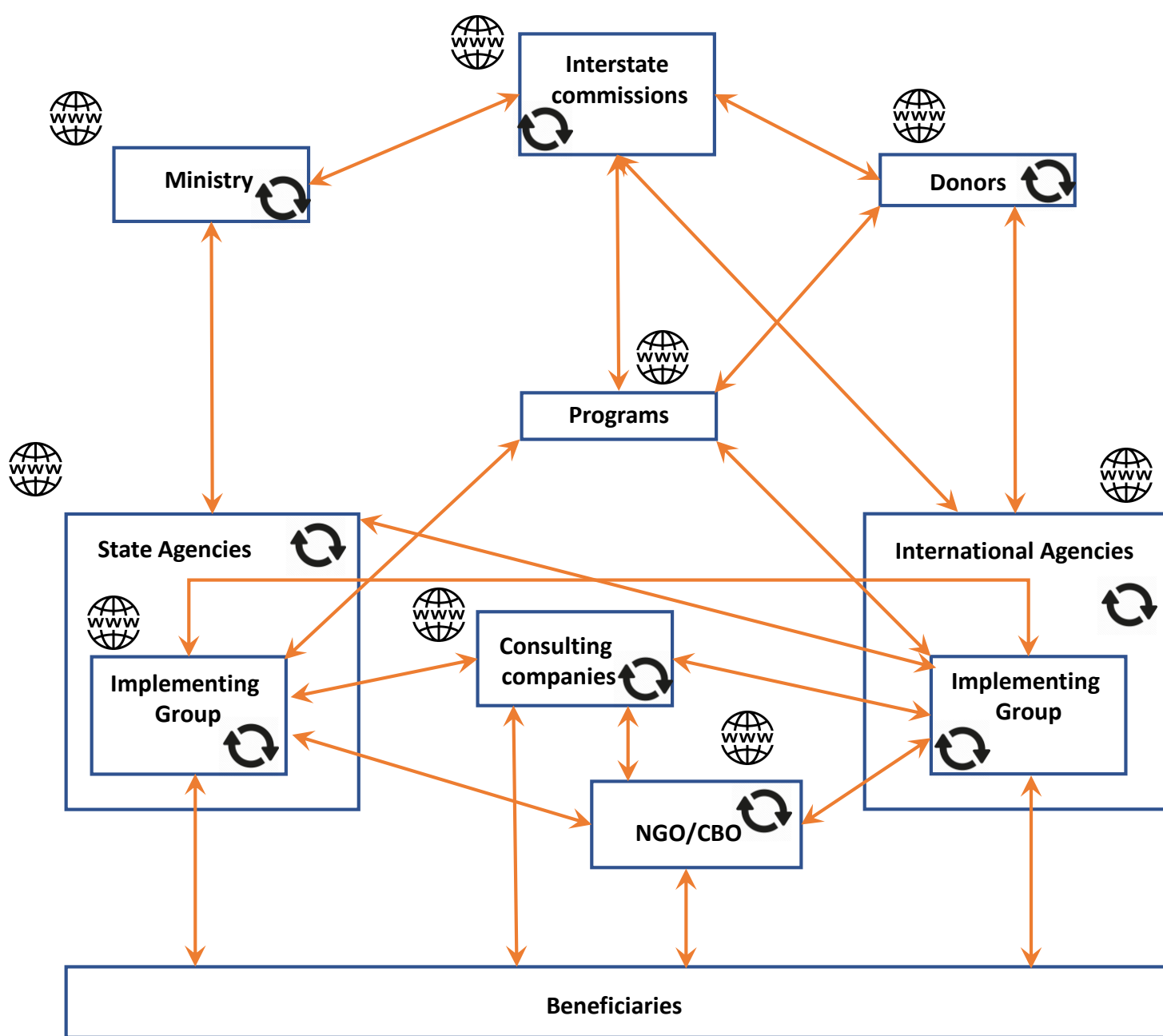


....Processes get complicated



..and each organization has its own internal communication process

....Processes get kind of difficult

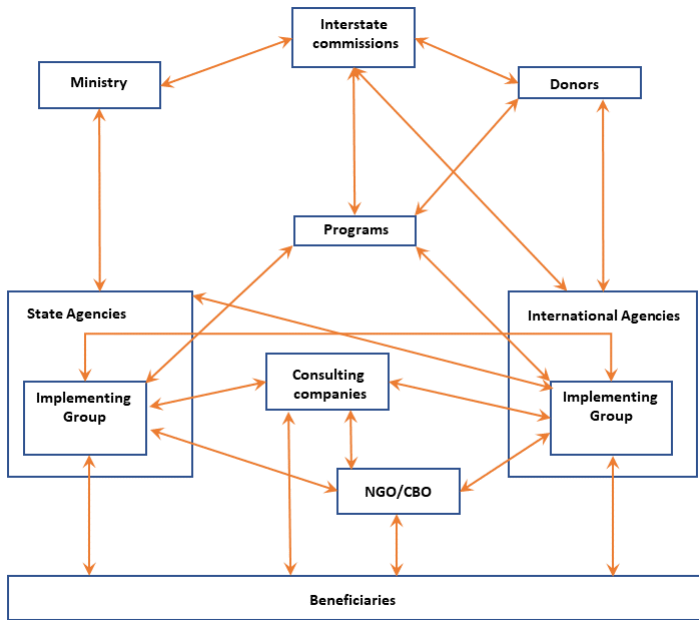


..and each organization and program have their own website for publishing data

....Processes get kind of complex



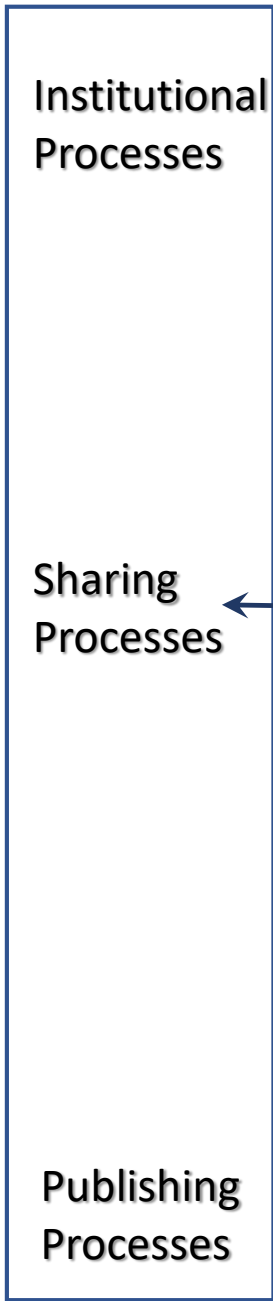
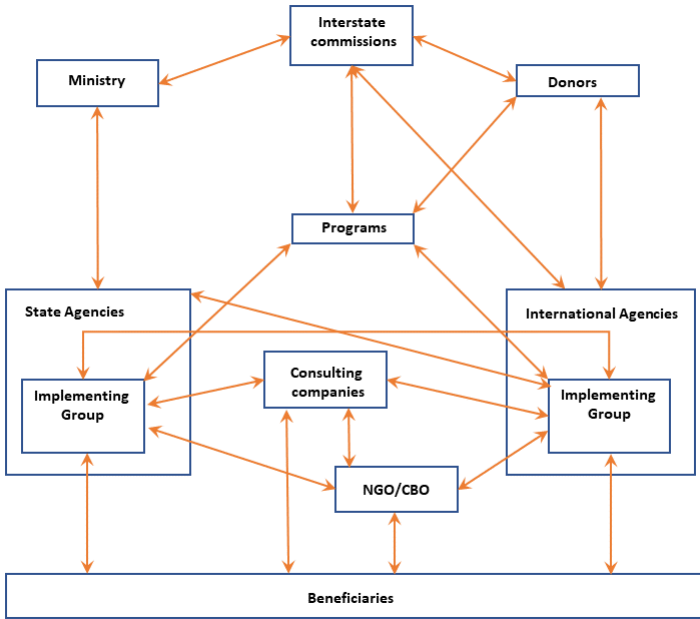
Institutional Processes
(e.g., how does it work the financial reporting within a specific NGOs) - team



Sharing Processes
(e.g., how does it work the production of data within a specific project implementation) - network



Publishing Processes
(i.g., what rules applies to published data)



K-LINK

First Step: organizational assessment

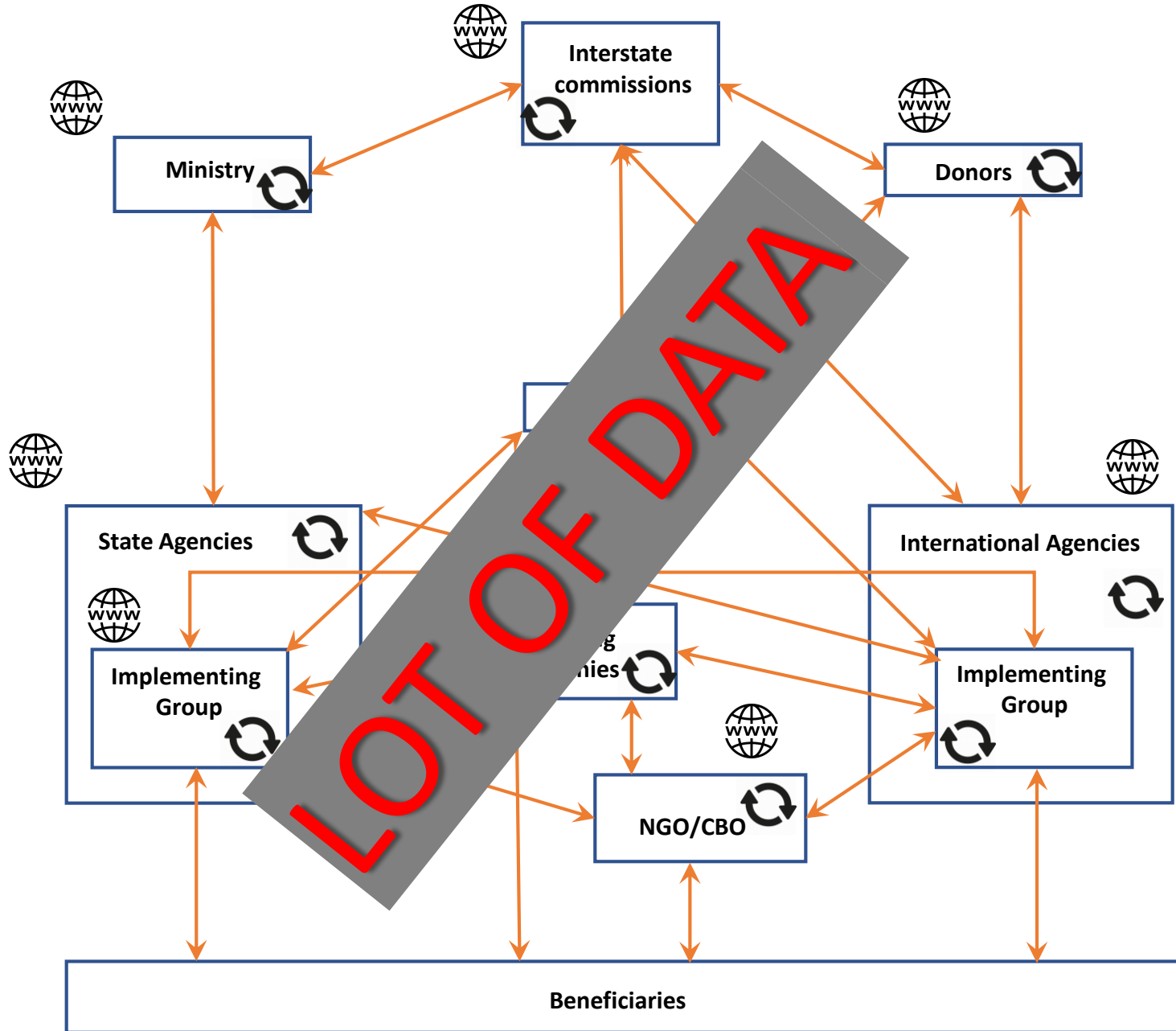
K-Link: the vision

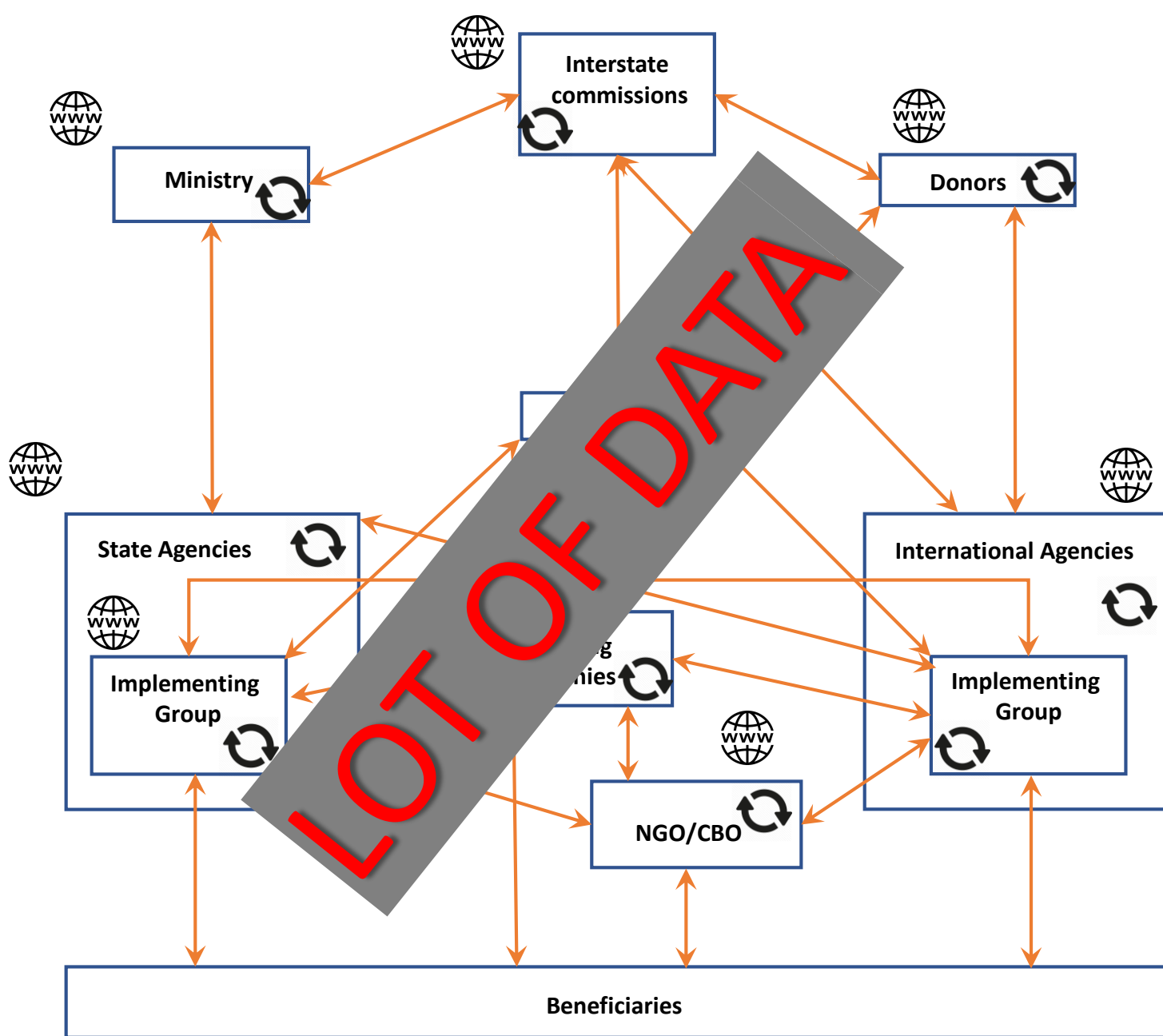
Organizational dimension

Technological dimension

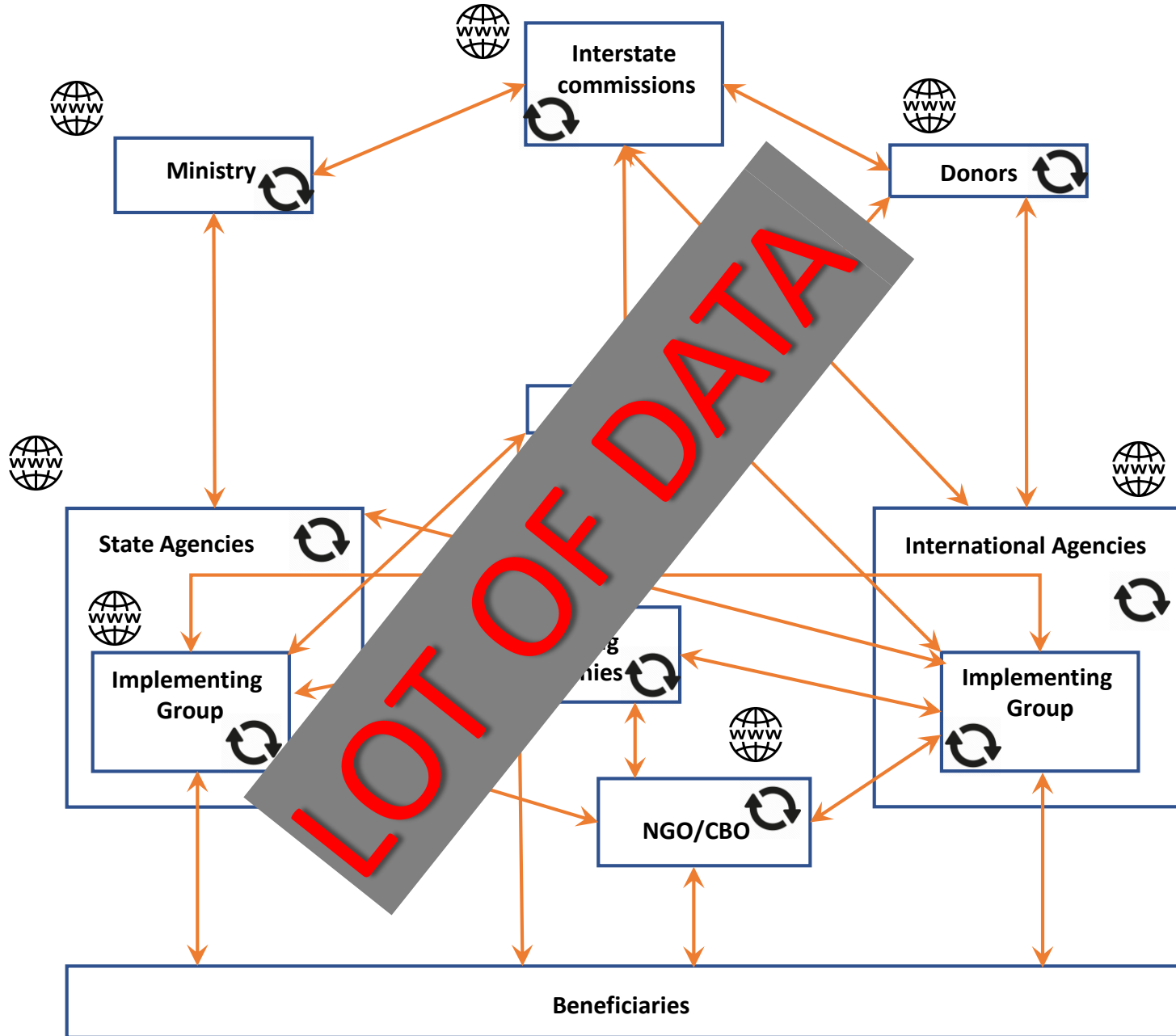
Participatory dimension

Sustainability dimension





Where is the data?
 What kind of data?
 How can I use data?
 Who is the data owner?
 What about the data quality?
 How to avoid data will disappear after the project termination?



Where is the data?
 What kind of data?
 How can I use data?
 Who is the data owner?
 What about the data quality?
 How to avoid data will disappear after the project termination?



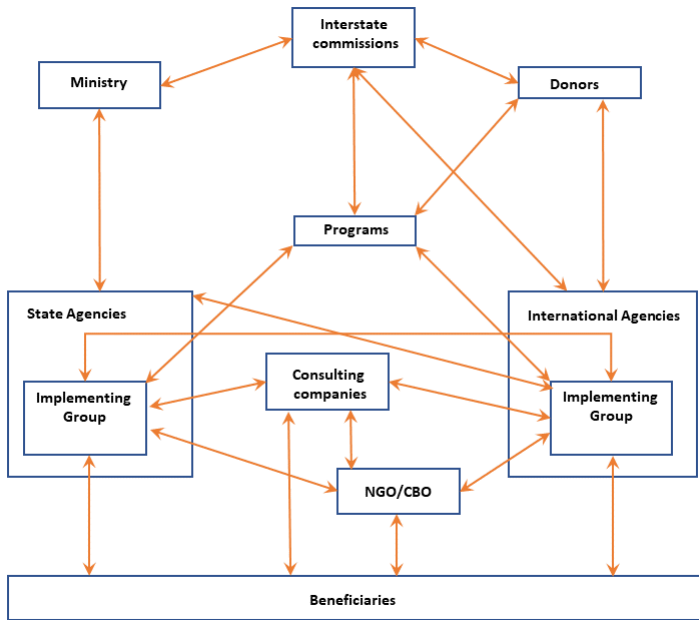
Better Data
 Better Knowledge



- . Increase learning processes
- . Enhance the reputation and project goals achievement
- . Enhance inclusion and participation
- . Ease the hand over mechanisms



Institutional Data
(e.g., financial files of NGOs)



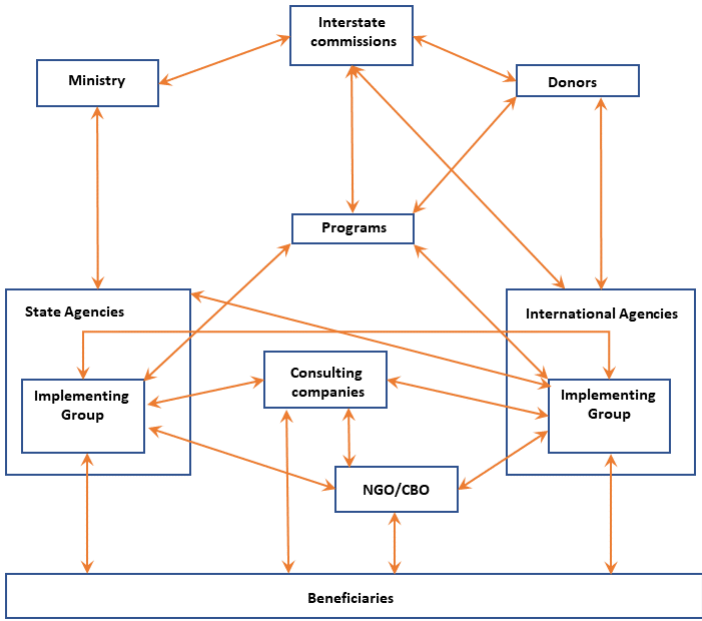
Shared Data
(e.g., working documents produced by project members)



Published Data
(e.g., final reports and dissemination materials)

Institution 

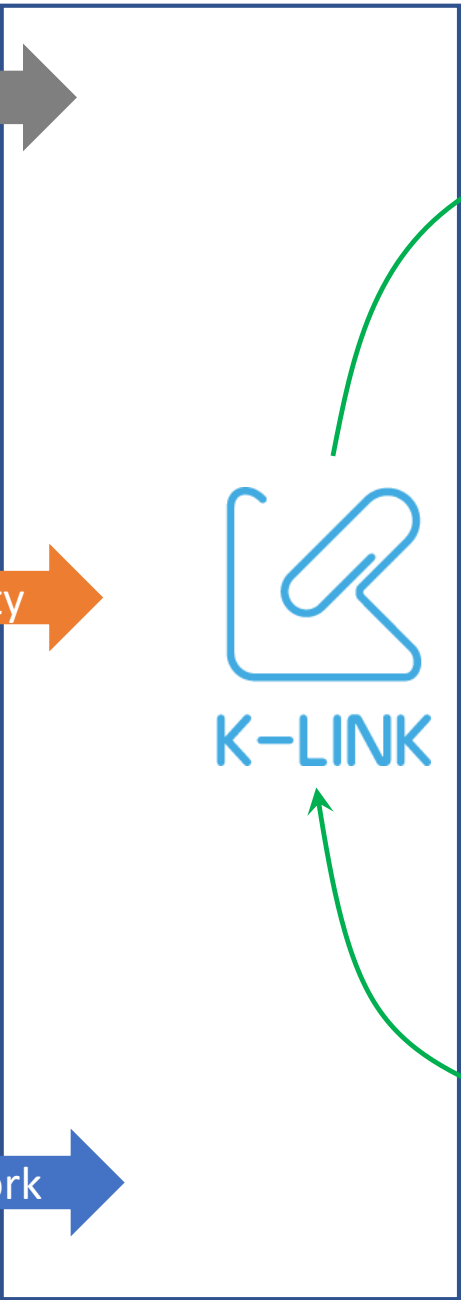
team 



community 



network 



Requirements collection

USERS Feedback

Third Step: tune the technology

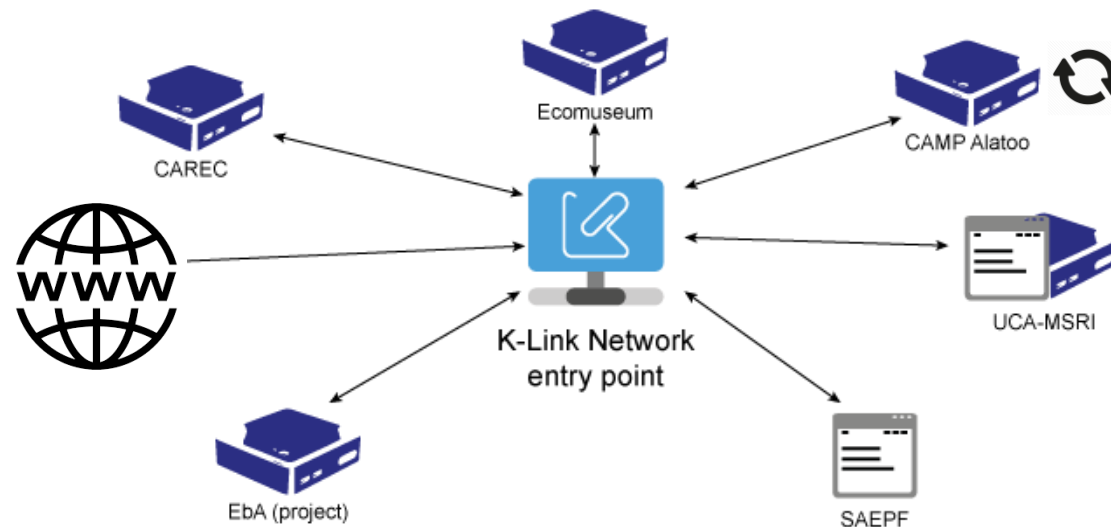


Co-Design

ADAPTATION of Technology

What is K-Link?

- Not a central repository
- Network of “knowledge” nodes (websites, DMSs, CMSs)
- Linking existing platforms

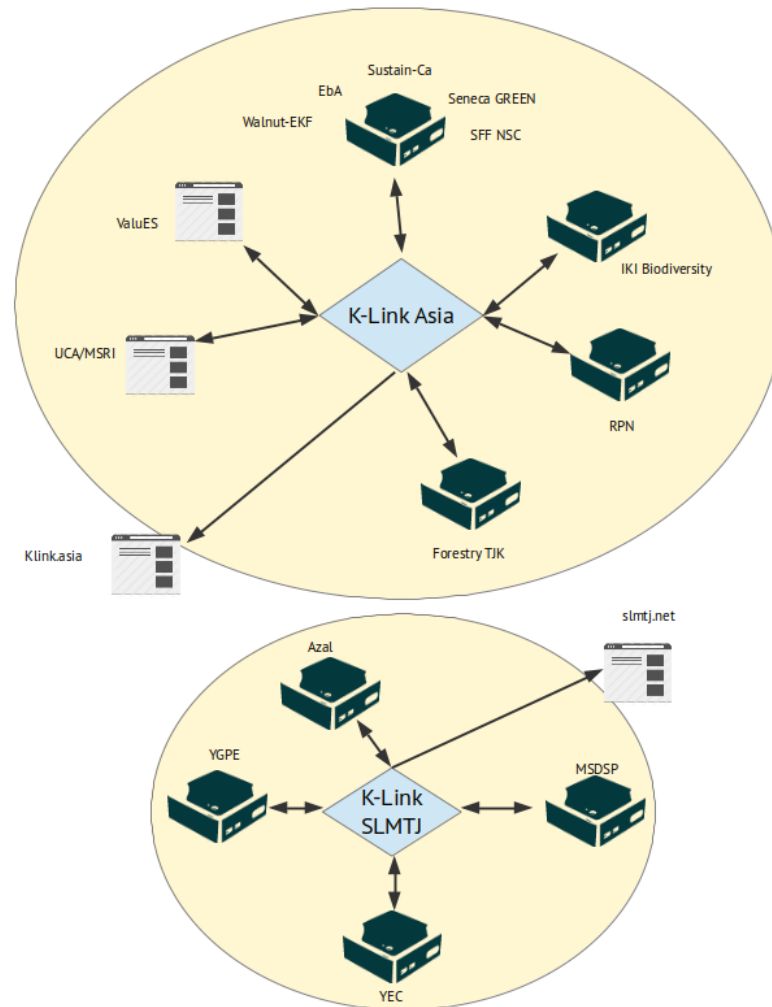


K-Box: what is it?

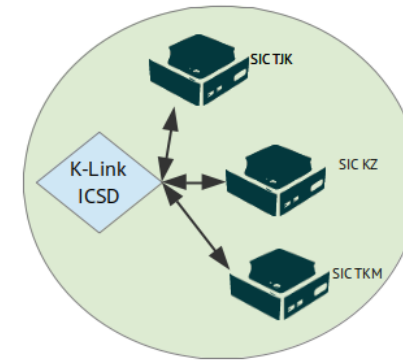
- Not all partner institutions have a DMS or CMS
- => Need for a custom DMS, natively integrated with K-Link
 - Multi-lingual (English, Russian, and French)
 - Flexible structure for documents
 - Easy sharing within / outside of institutions








Current K-Link Ecosystem



K-Link Networks

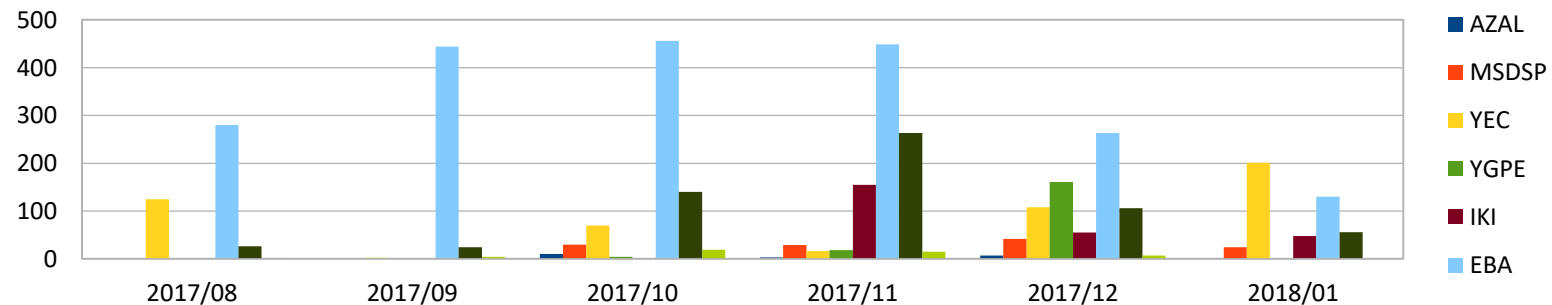


Legend

-  K-Link orchestrator
-  K-Box
-  Website (with adapter)
-  Open K-Link network
-  Closed K-Link network

Files uploaded

Month	AZAL	MSDSP	YEC	YGPE	IKI	EBA	RPN	Forestry	
Earlier							7316	5099	211
2017/08			125				280	26	1
2017/09			2				444	24	4
2017/10	10	30	70	4			456	140	19
2017/11	3	29	16	18	155		449	263	15
2017/12	7	42	108	161	55		263	106	7
2018/01		24	201		48		130	56	
Total	20	125	522	183	258		9338	5714	257
									Sum:
									16417



K-Link: the vision

Organizational dimension

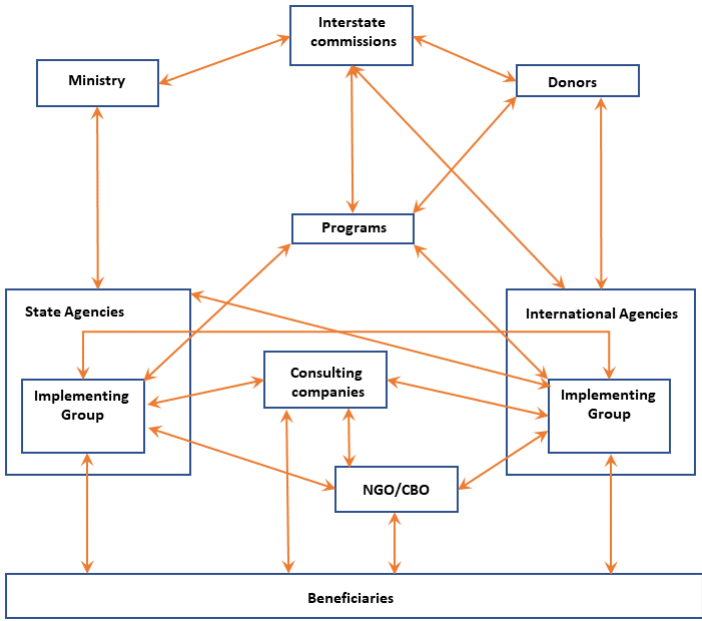
Technological dimension

Participatory dimension

Sustainability dimension

Institution 

team 



community 



network 



Fourth Step: Participation

OPEN SOURCE

Participation leads to innovation

Innovation leads to prosperity

ANCHOR Technology

K-Link: the vision

Organizational dimension

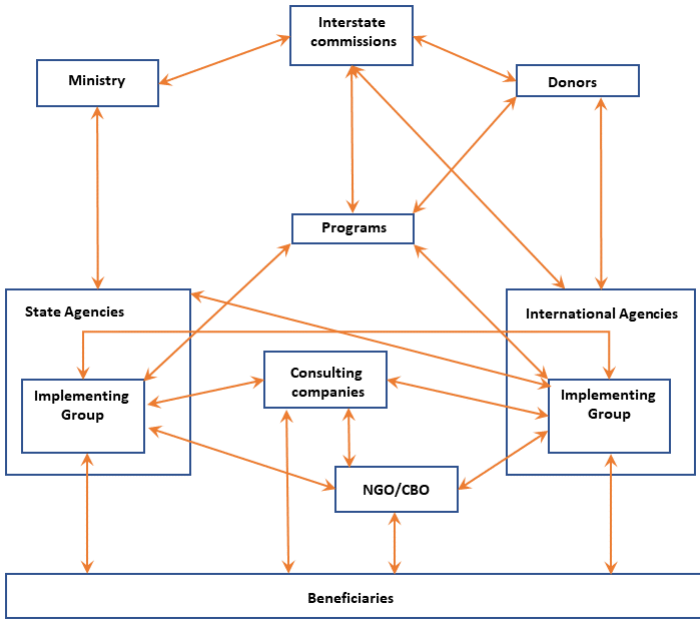
Technological dimension

Participatory dimension

Sustainability dimension

Institution 

team 



community 



network 



Fifth Step: sustainability

OWNERSHIP

Economic Opportunities

Distributing investment

REDUCING cost

Thanks!

Questions?